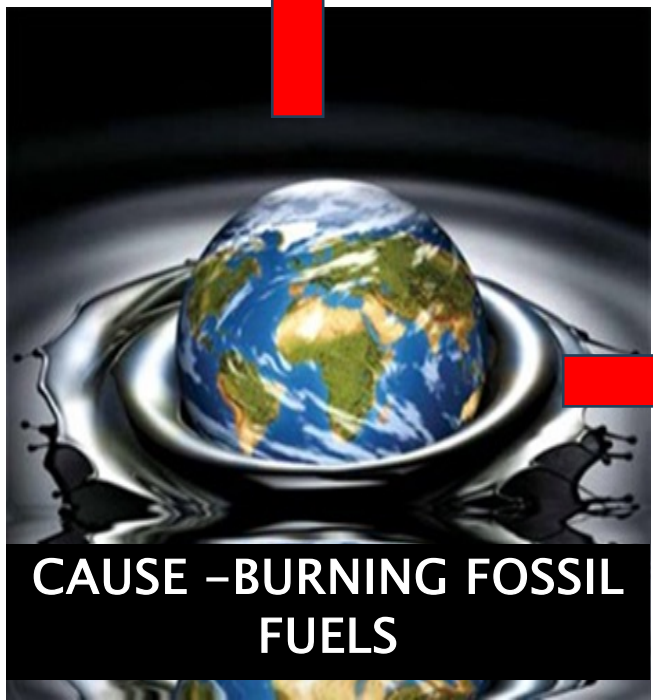


Code Red: Climate Resilience and Adaptation *Integrating Climate Resilience into Business Policy*

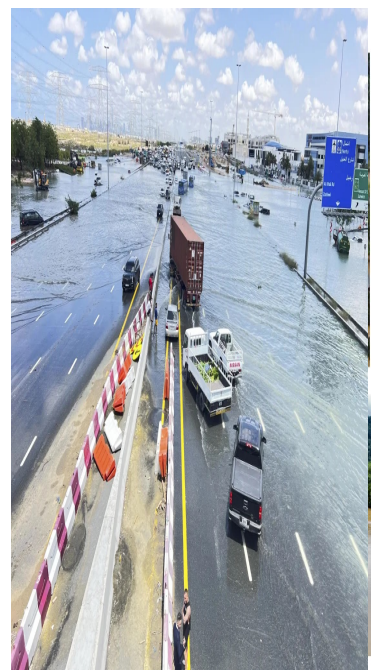
- ❑ The Climate Emergency
- ❑ Being part of the Solution
- ❑ Influencing Business Policy

DUBAI, UAE

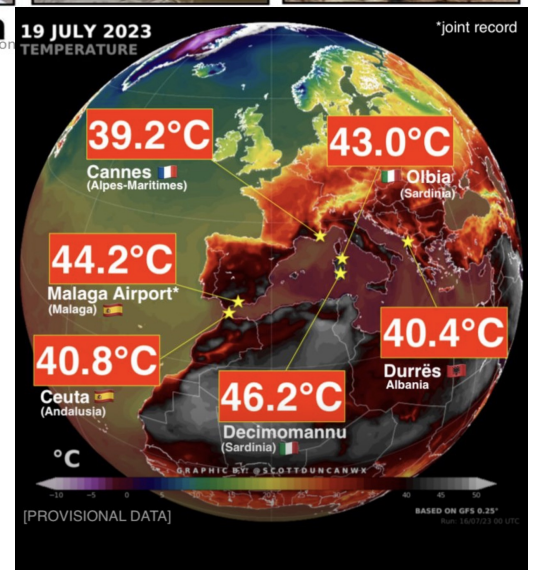
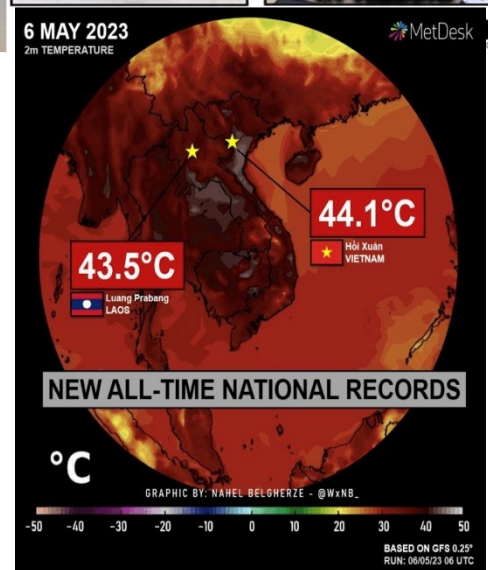
- 1) Extreme weather events
- 2) Critical changes to Earth systems
- 3) Biodiversity loss and ecosystem

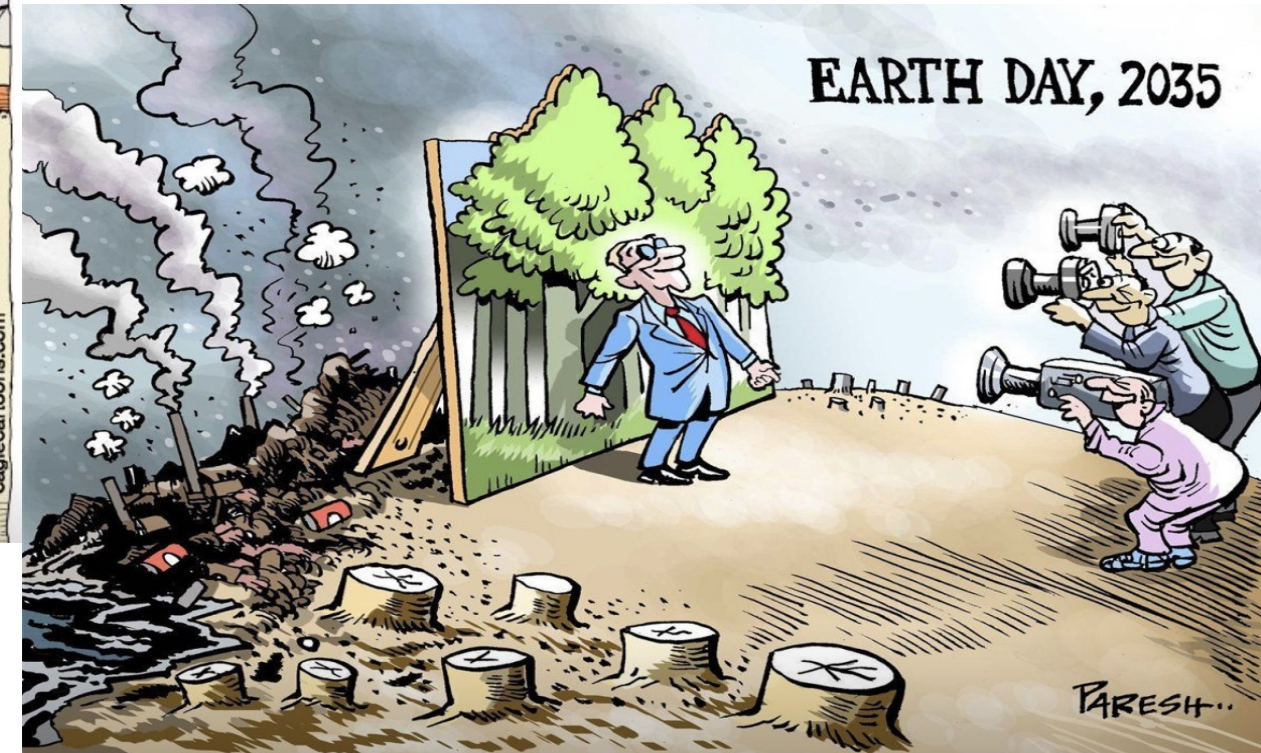


Subsides US\$ 7 trillion



Major flooding events in just the last two weeks:





❑ How Business Contributes to Extreme weather/Global Warming ?

- ❑ ENERGY/ELECTRICITY – 60% –70% Supplied by Fossil fuels
- ❑ LOGISTICS / SUPPLY CHAIN – 100% powered by Fossil fuels
/Deforestation/Water

UNSDG's 6-7-15 integrate in Business Policy



CODE RED
SRI LANKA
**CLIMATE
SUMMIT '24**



*The
Ceylon
Chamber of
Commerce*



REDUCE WATER FOOTPRINT



REDUCE CARBON FOOTPRINT



CONSERVE AND REFOREST

Influencing BUSINESS POLICY



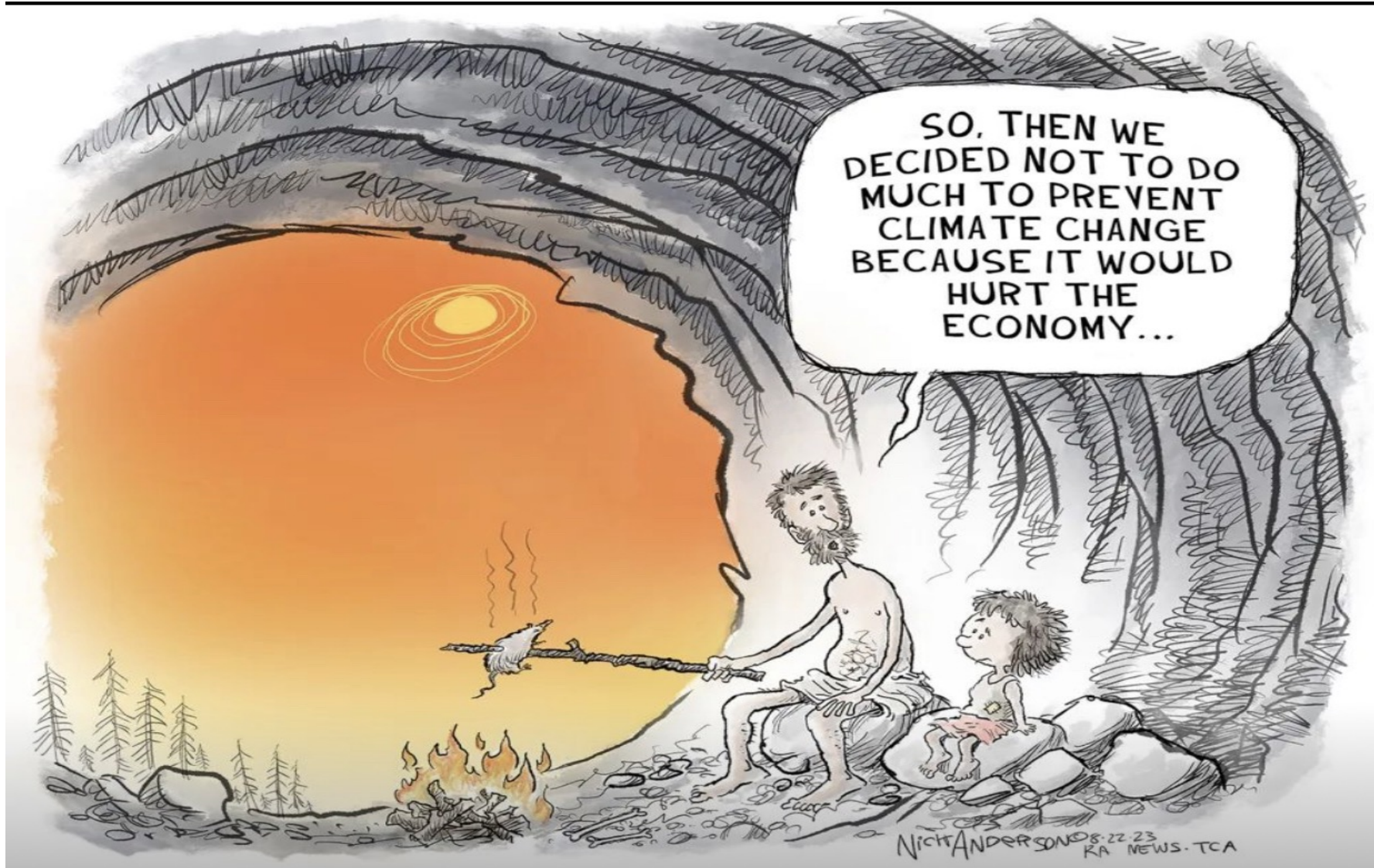
Vision, Mission and Values

-Is the Climate emergency acknowledged ?

- Sustainable Products /services – **Sustainable?**
- Sustainable Sourcing & Supply Chains – **Sourcing sustainably?**
- Sustainable Manufacture – **Renewable energy driven?**
- Sustainable logistics – **Sustainable**
- transportation**
- Sustainable Recycling /reuse – **Circular /Life cycle?**

Influencing BUSINESS POLICY

- Board / C suite Agenda
- Monitor Climate emergency risks and impacts
- Be part of the solution – Carbon and water footprint
- Embed in Business Policy





Thank you for your time

Dr. R.A.Fernando *Chairman/CEO*, Global Strategic Corporate Sustainability (Pvt) Ltd.
Visiting Faculty , Institute of Directors (Luxembourg), INSEAD (France)

Mobile +94773442914

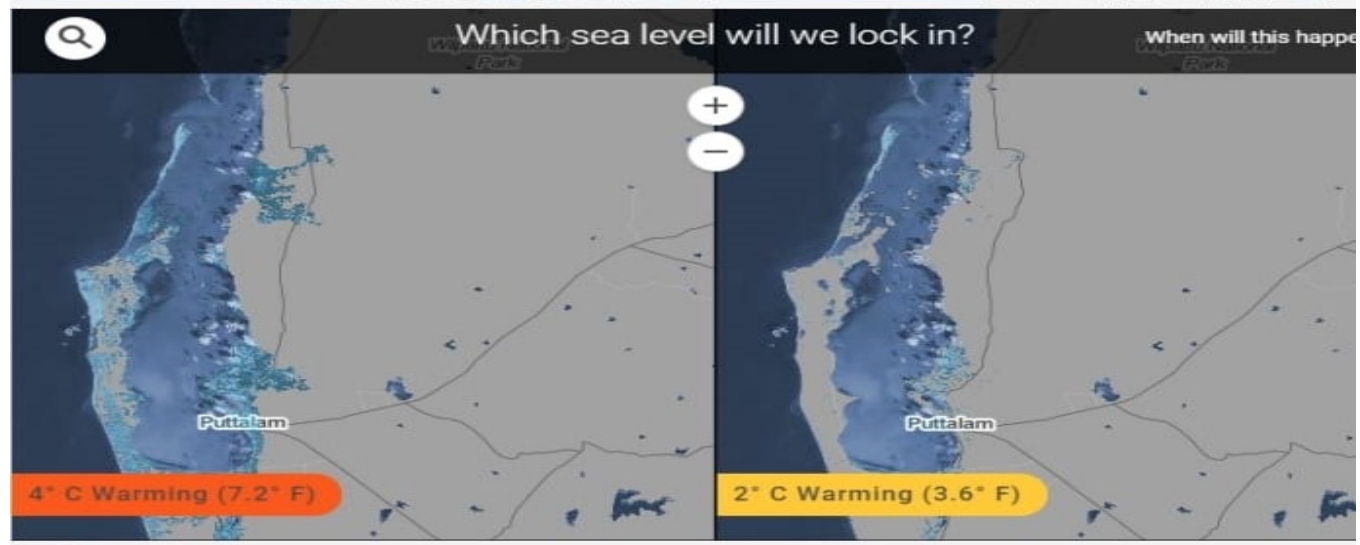
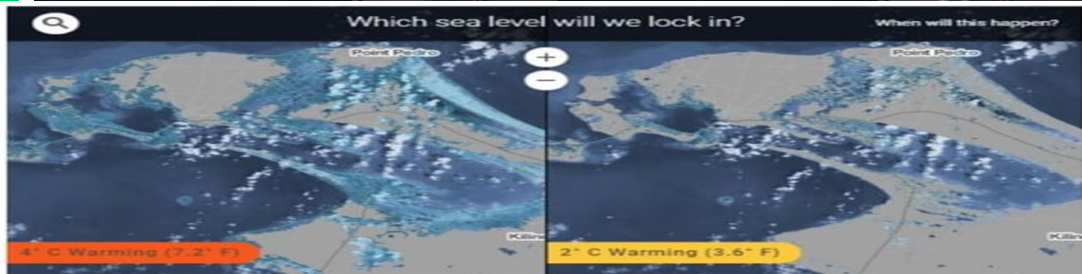
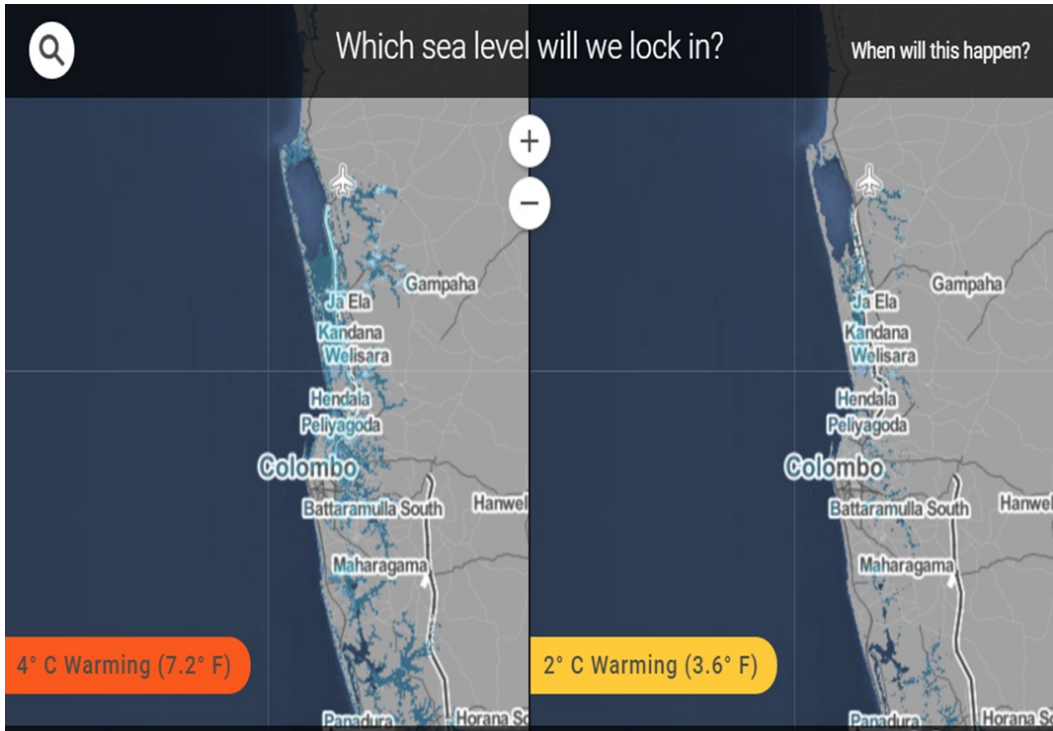
e-mails: ravi.fernando@insead.edu : ravi@ceylonam.com

Skype- ravindra.ajith.Fernando

twitter - @RaviFernando21

www.strategiccorporatesustainability.com





CODE RED
SRI LANKA
CLIMATE
SUMMIT '24



The
Ceylon
Chamber of
Commerce

